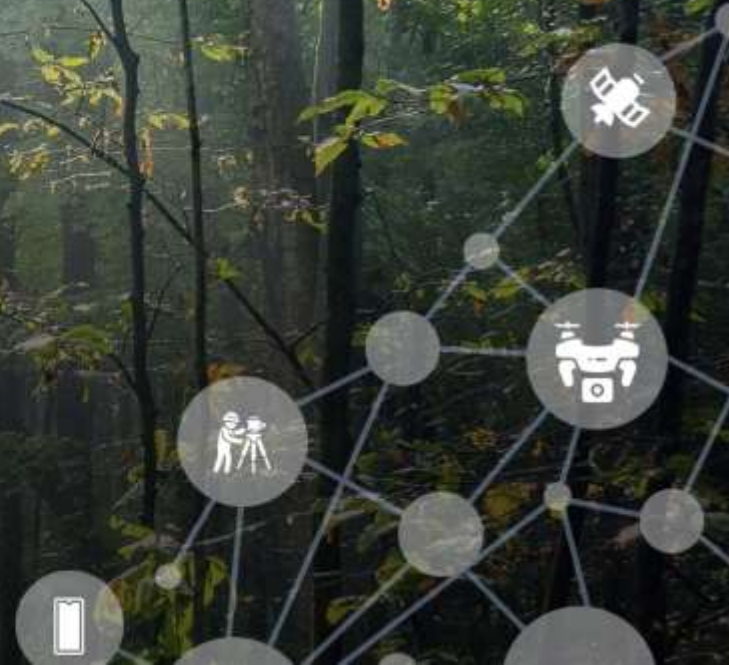


Enterprise Solution \_\_\_\_\_

# Forest land

Decision Support System



# Outline

An introduction to Forest  
Land Decision Support  
System

---

01.

## Background

Genesis of Forest Land  
Decision Support system

04.

## Forest Geodatabase

Approach & methodology for  
Forest Geodatabase

02.

## Forest Land DSS

Decision Support System  
Features & Functionalities

05.

## Odisha Case Study

Implementation of Forest DSS  
in Odisha

03.

## Advantages

Effectiveness of Forest  
DSS in decision making

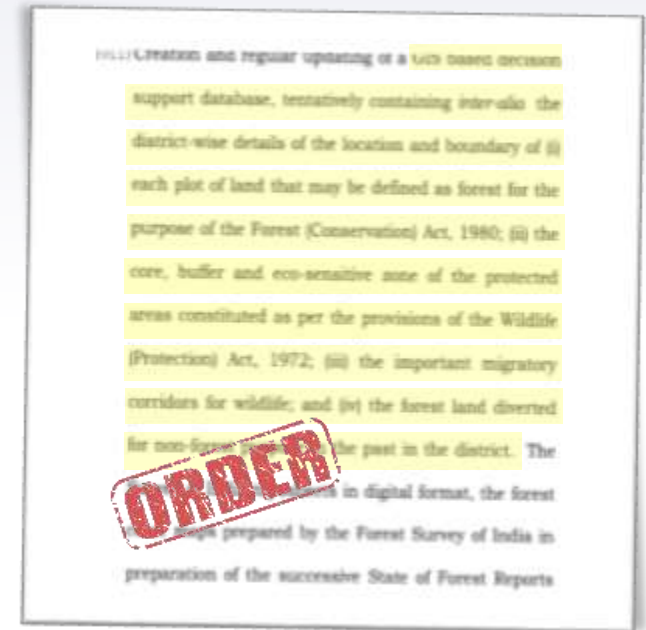
06.

## Q&A

Inviting Questions & remarks  
from the guests

# Background

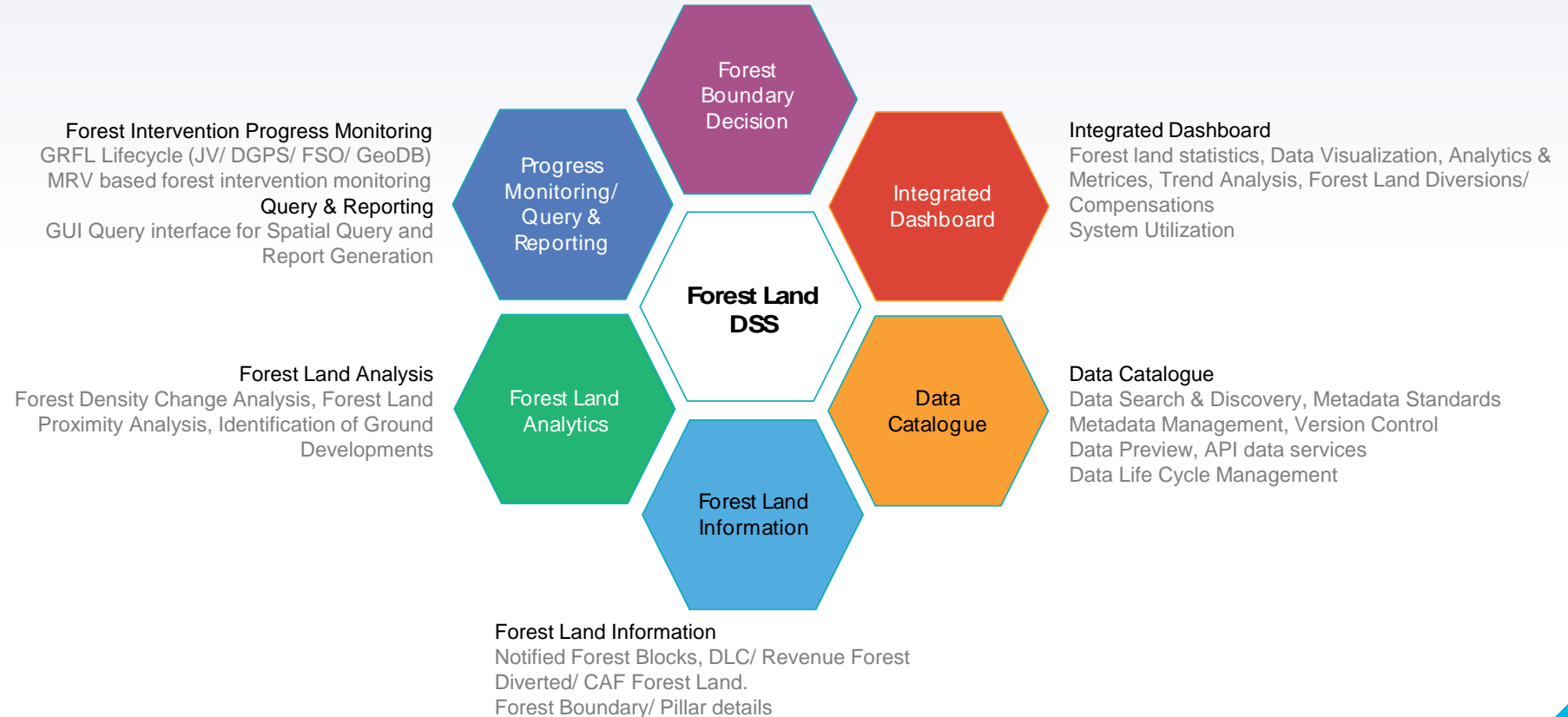
- ▶ Forests: lifeline of earth
- ▶ Protection of Forests is imperative for survival of life
- ▶ Forest Conservation Act, 1980
- ▶ Hon'ble Supreme Court of India - decision dated 6<sup>th</sup> July 2011



# DSS Modules

## Forest Boundary Decisions

Decision on Forest Boundary through analysis of forest boundary data from different sources



# Decision Support for Forest boundary interpretation

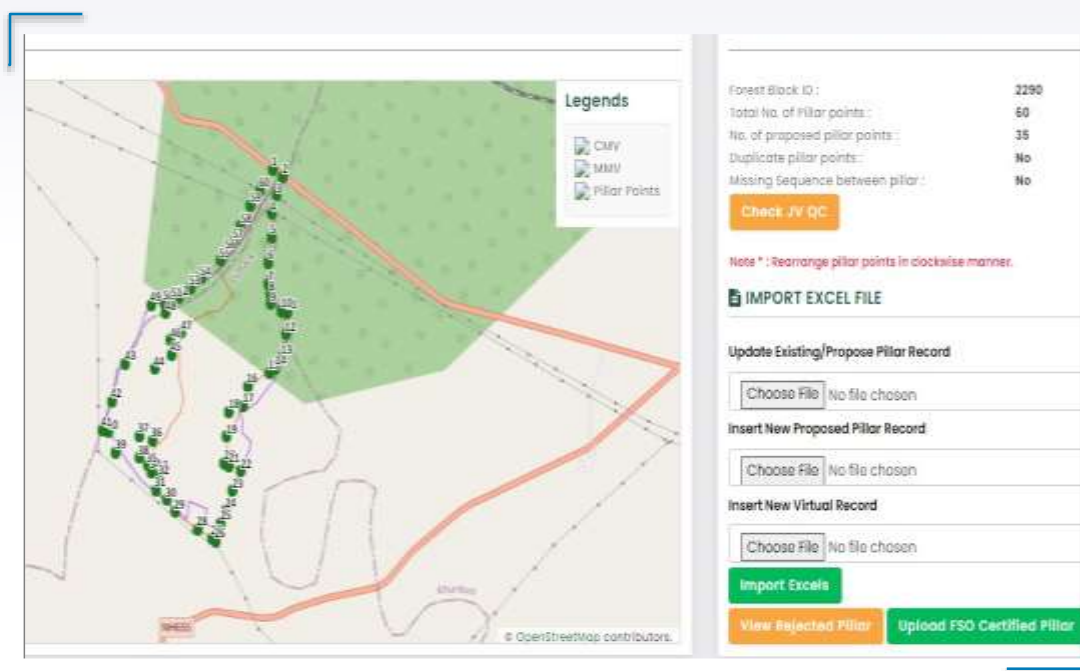


Notified area: 586.73 Ha  
WP area in GIS (MMV): 607.68 Ha  
GIS area from Cadastrals: 604.46 Ha

— Working plan boundary  
— Cadastral boundary

- Village Cadastral maps
- Forest Working Plan Maps
- Sol Toposheets
- HRSI

# Verification of Forest boundary demarcation

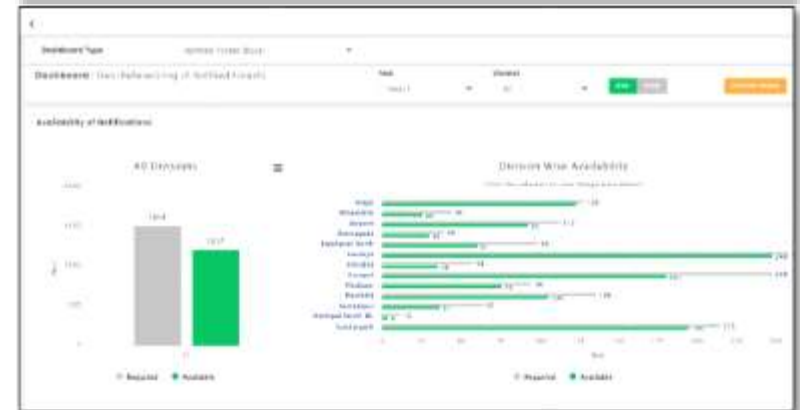


Mobile UI for demarcation of Forest boundary

Verification of field demarcated Forest Boundary

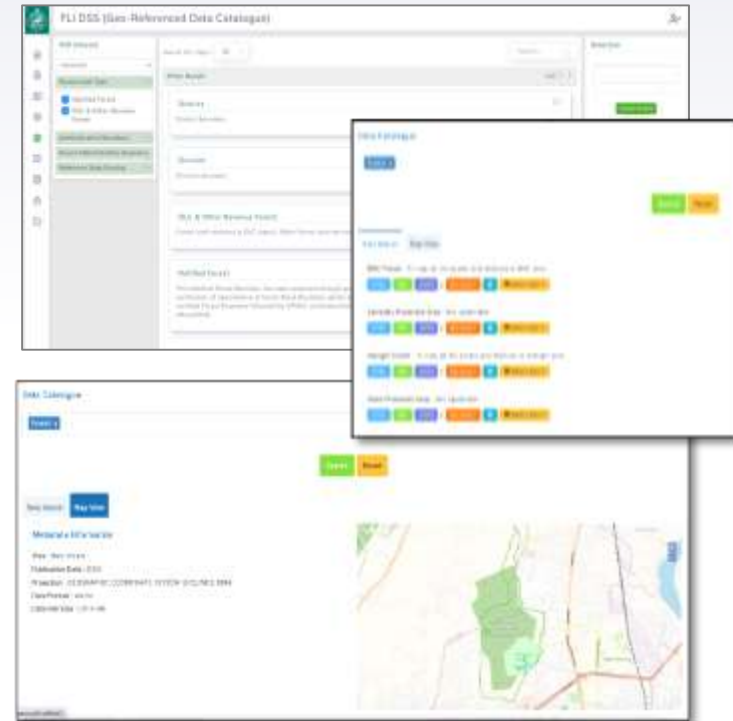
# Integrated Dashboard

- ▶ Forest Summary and Metrics (Forest Land, Forest Cover, Diversions, CAF)
- ▶ Spatial Data Visualization (Forest land use, Forest Density hotspots, Vulnerable locations)
- ▶ Progress Monitoring (Forestry interventions, Georeferencing of Forest lands)
- ▶ Forest Land Diversion/ Compensation
- ▶ Step wise drilldown of summarized information
- ▶ System Utilization Insights (System Utilization at different levels of operational hierarchy)



# Forest Land Catalogue

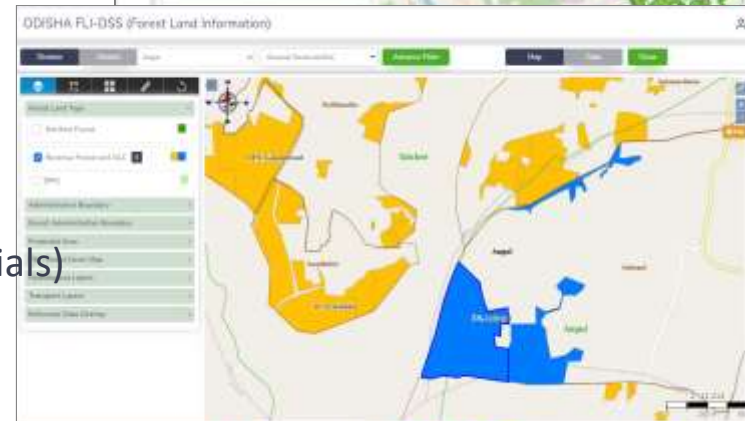
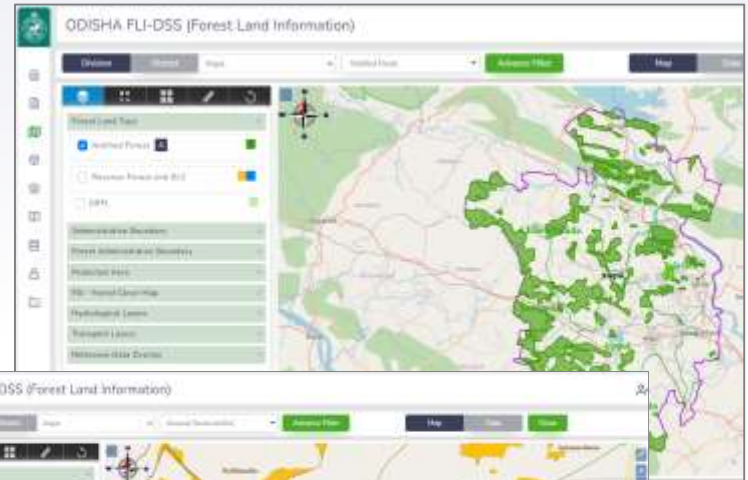
- ▶ Metadata Standards (Data Integrity, Data Interoperability, Search & Discovery)
- ▶ Search & Discovery of Forest Land Records/ Data Layers (multiparameter search, data preview)
- ▶ API Services (connectivity and data interoperability)
- ▶ Data/ Service preview
- ▶ Version Control & Lifecycle Management (versioning & relevancy of data)





# Forest Land Information

- ▶ Forest Administrative boundaries
- ▶ Forest Land
  - ▶ Notified Forest Lands
  - ▶ Revenue Forest Lands
  - ▶ Protected Area/ Sanctuary/ ESZ/
  - ▶ Wildlife Corridors
- ▶ Forest Boundary/ Pillar information
- ▶ Forest Land Georeferencing
  - ▶ Forest Land Notification/ Maps
  - ▶ Joint Verification (Forest & Revenue officials)
  - ▶ DGPS survey
  - ▶ Technical verification
  - ▶ FSO Certification





# Query & Reporting

- ▶ GUI based Spatial Query Builder
- ▶ Data Layer Attribute Filters/ Dynamic Overlays
- ▶ Temporal Data Filters/ Search Criteria
- ▶ Forest Land Diversions/ Compensations
- ▶ MRV Platform of Forestry Interventions
- ▶ Custom report builder/ export
- ▶ Composite report including Maps & Charts
- ▶ Notifications & Alerts

Filter Details of Adu (2) At Adigarh Range, Adigarh Division

Sl. No.	Plot No.	Area (Hect)	Area (Acres)	Area (Sq. M)	Area (Sq. Ft)	Area (Sq. Yd)	Area (Sq. Mile)	Area (Sq. Inch)	Area (Sq. Cent)	Area (Sq. Dec)	Area (Sq. Mill)	Area (Sq. Mic)	Area (Sq. Nano)	Area (Sq. Pico)	Area (Sq. Femto)	Area (Sq. Atto)	Area (Sq. Zepto)	Area (Sq. Yocto)	Area (Sq. Ronto)	Area (Sq. Hecto)	Area (Sq. Kilo)	Area (Sq. Mega)	Area (Sq. Giga)	Area (Sq. Tera)	Area (Sq. Peta)	Area (Sq. Exa)	Area (Sq. Zetta)	Area (Sq. Yotta)
1	ADU/1	22.34	47.5	0.076	0.029	36224.84	12766.50	15.077	15077.00	15077.00	15077.00	15077.00	15077.00	15077.00	15077.00	15077.00	15077.00	15077.00	15077.00	15077.00	15077.00	15077.00	15077.00	15077.00	15077.00	15077.00	15077.00	15077.00
2	ADU/2	22.34	47.5	0.076	0.029	36224.84	12766.50	15.077	15077.00	15077.00	15077.00	15077.00	15077.00	15077.00	15077.00	15077.00	15077.00	15077.00	15077.00	15077.00	15077.00	15077.00	15077.00	15077.00	15077.00	15077.00	15077.00	15077.00
3	ADU/3	22.34	47.5	0.076	0.029	36224.84	12766.50	15.077	15077.00	15077.00	15077.00	15077.00	15077.00	15077.00	15077.00	15077.00	15077.00	15077.00	15077.00	15077.00	15077.00	15077.00	15077.00	15077.00	15077.00	15077.00	15077.00	15077.00
4	ADU/4	22.34	47.5	0.076	0.029	36224.84	12766.50	15.077	15077.00	15077.00	15077.00	15077.00	15077.00	15077.00	15077.00	15077.00	15077.00	15077.00	15077.00	15077.00	15077.00	15077.00	15077.00	15077.00	15077.00	15077.00	15077.00	15077.00
5	ADU/5	22.34	47.5	0.076	0.029	36224.84	12766.50	15.077	15077.00	15077.00	15077.00	15077.00	15077.00	15077.00	15077.00	15077.00	15077.00	15077.00	15077.00	15077.00	15077.00	15077.00	15077.00	15077.00	15077.00	15077.00	15077.00	15077.00
6	ADU/6	22.34	47.5	0.076	0.029	36224.84	12766.50	15.077	15077.00	15077.00	15077.00	15077.00	15077.00	15077.00	15077.00	15077.00	15077.00	15077.00	15077.00	15077.00	15077.00	15077.00	15077.00	15077.00	15077.00	15077.00	15077.00	15077.00
7	ADU/7	22.34	47.5	0.076	0.029	36224.84	12766.50	15.077	15077.00	15077.00	15077.00	15077.00	15077.00	15077.00	15077.00	15077.00	15077.00	15077.00	15077.00	15077.00	15077.00	15077.00	15077.00	15077.00	15077.00	15077.00	15077.00	15077.00
8	ADU/8	22.34	47.5	0.076	0.029	36224.84	12766.50	15.077	15077.00	15077.00	15077.00	15077.00	15077.00	15077.00	15077.00	15077.00	15077.00	15077.00	15077.00	15077.00	15077.00	15077.00	15077.00	15077.00	15077.00	15077.00	15077.00	15077.00
9	ADU/9	22.34	47.5	0.076	0.029	36224.84	12766.50	15.077	15077.00	15077.00	15077.00	15077.00	15077.00	15077.00	15077.00	15077.00	15077.00	15077.00	15077.00	15077.00	15077.00	15077.00	15077.00	15077.00	15077.00	15077.00	15077.00	15077.00
10	ADU/10	22.34	47.5	0.076	0.029	36224.84	12766.50	15.077	15077.00	15077.00	15077.00	15077.00	15077.00	15077.00	15077.00	15077.00	15077.00	15077.00	15077.00	15077.00	15077.00	15077.00	15077.00	15077.00	15077.00	15077.00	15077.00	15077.00
11	ADU/11	22.34	47.5	0.076	0.029	36224.84	12766.50	15.077	15077.00	15077.00	15077.00	15077.00	15077.00	15077.00	15077.00	15077.00	15077.00	15077.00	15077.00	15077.00	15077.00	15077.00	15077.00	15077.00	15077.00	15077.00	15077.00	15077.00
12	ADU/12	22.34	47.5	0.076	0.029	36224.84	12766.50	15.077	15077.00	15077.00	15077.00	15077.00	15077.00	15077.00	15077.00	15077.00	15077.00	15077.00	15077.00	15077.00	15077.00	15077.00	15077.00	15077.00	15077.00	15077.00	15077.00	15077.00
13	ADU/13	22.34	47.5	0.076	0.029	36224.84	12766.50	15.077	15077.00	15077.00	15077.00	15077.00	15077.00	15077.00	15077.00	15077.00	15077.00	15077.00	15077.00	15077.00	15077.00	15077.00	15077.00	15077.00	15077.00	15077.00	15077.00	15077.00
14	ADU/14	22.34	47.5	0.076	0.029	36224.84	12766.50	15.077	15077.00	15077.00	15077.00	15077.00	15077.00	15077.00	15077.00	15077.00	15077.00	15077.00	15077.00	15077.00	15077.00	15077.00	15077.00	15077.00	15077.00	15077.00	15077.00	15077.00
15	ADU/15	22.34	47.5	0.076	0.029	36224.84	12766.50	15.077	15077.00	15077.00	15077.00	15077.00	15077.00	15077.00	15077.00	15077.00	15077.00	15077.00	15077.00	15077.00	15077.00	15077.00	15077.00	15077.00	15077.00	15077.00	15077.00	15077.00
16	ADU/16	22.34	47.5	0.076	0.029	36224.84	12766.50	15.077	15077.00	15077.00	15077.00	15077.00	15077.00	15077.00	15077.00	15077.00	15077.00	15077.00	15077.00	15077.00	15077.00	15077.00	15077.00	15077.00	15077.00	15077.00	15077.00	15077.00
17	ADU/17	22.34	47.5	0.076	0.029	36224.84	12766.50	15.077	15077.00	15077.00	15077.00	15077.00	15077.00	15077.00	15077.00	15077.00	15077.00	15077.00	15077.00	15077.00	15077.00	15077.00	15077.00	15077.00	15077.00	15077.00	15077.00	15077.00
18	ADU/18	22.34	47.5	0.076	0.029	36224.84	12766.50	15.077	15077.00	15077.00	15077.00	15077.00	15077.00	15077.00	15077.00	15077.00	15077.00	15077.00	15077.00	15077.00	15077.00	15077.00	15077.00	15077.00	15077.00	15077.00	15077.00	15077.00
19	ADU/19	22.34	47.5	0.076	0.029	36224.84	12766.50	15.077	15077.00	15077.00	15077.00	15077.00	15077.00	15077.00	15077.00	15077.00	15077.00	15077.00	15077.00	15077.00	15077.00	15077.00	15077.00	15077.00	15077.00	15077.00	15077.00	15077.00
20	ADU/20	22.34	47.5	0.076	0.029	36224.84	12766.50	15.077	15077.00	15077.00	15077.00	15077.00	15077.00	15077.00	15077.00	15077.00	15077.00	15077.00	15077.00	15077.00	15077.00	15077.00	15077.00	15077.00	15077.00	15077.00	15077.00	15077.00



# Advantages of Forest DSS

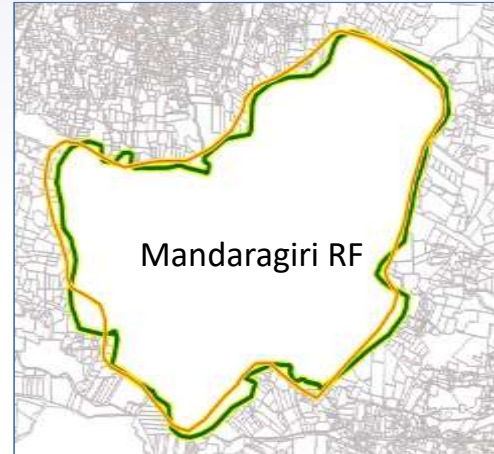
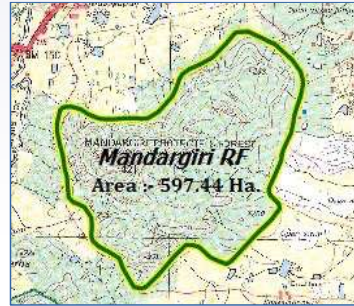
- ▶ Up-to-date forestland insights on Web/ Mobile platform
- ▶ Map based UI for assisting the Forest Operations
- ▶ Continuous remote monitoring for Boundary deviations
- ▶ Location based forest incidence Alerts & Notifications
- ▶ Timeseries analysis for trends / patterns insights
- ▶ Assessment of Forest Lands within proposed areas of interest
- ▶ Built on the SDI framework

# Forest Land Geodatabase Development



- Generation of Reference Forest Boundary
- Joint Verification and Boundary demarcation
- Management of Control Points & Base Station
- System Integrated DGPS Survey
- Technical verification of data

# Generation of Forest boundary references

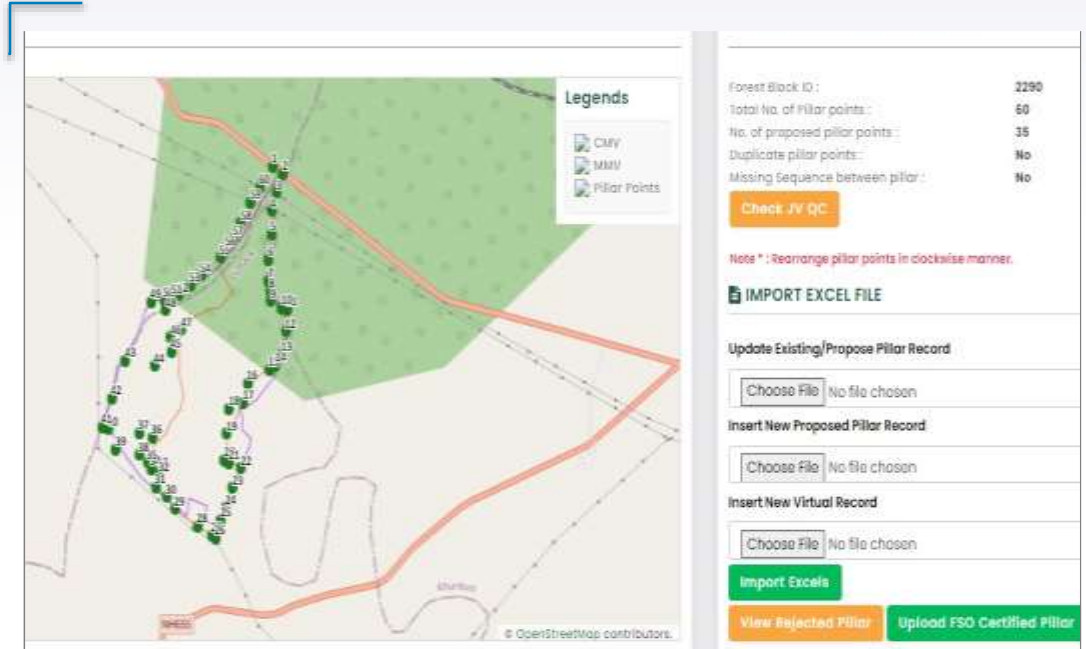


Notified area: 586.73 Ha  
WP area in GIS (MMV): 607.68 Ha  
GIS area from Cadastrals: 604.46 Ha

— Working plan boundary  
— Cadastral boundary

- Village Cadastral maps
- Forest Working Plan Maps
- Sol Toposheets
- HRSI

# Verification of Forest boundary demarcation



Mobile UI for demarcation of Forest boundary

Verification of field demarcated Forest Boundary







# Thank You!

[info@sparcindia.com](mailto:info@sparcindia.com)

(091) 674-662-9301/2/3

[www.sparcindia.com](http://www.sparcindia.com)

