



WRI INDIA



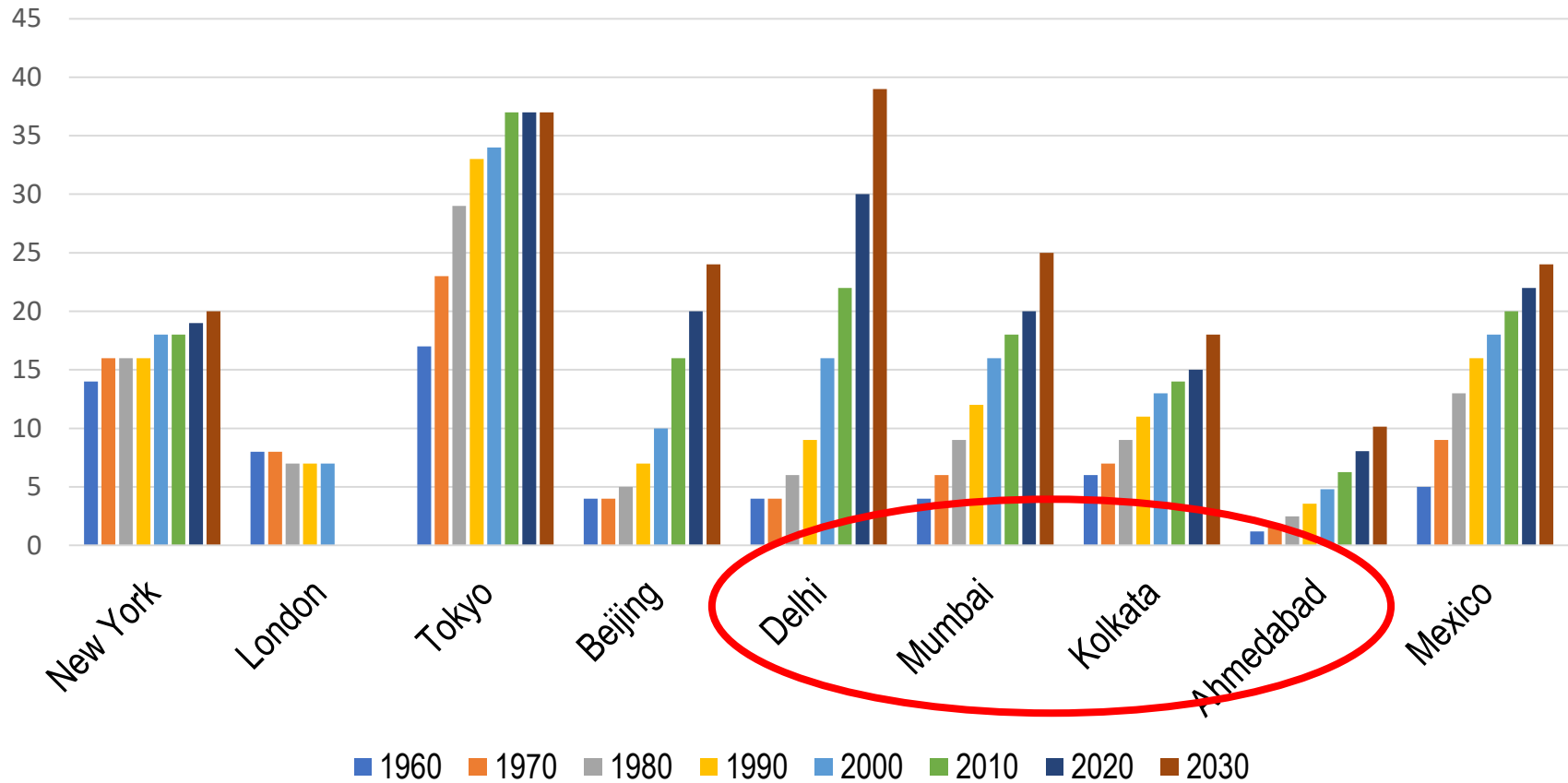
Empowering through inclusion – a holistic approach

O.P. Agarwal CEO,
WRI India

11th February, 2019

GeoSmart India
2019

INDIAN CITIES ARE GROWING RAPIDLY



Source - World Urbanization Prospects 2018 - UN DESA



WRI INDIA

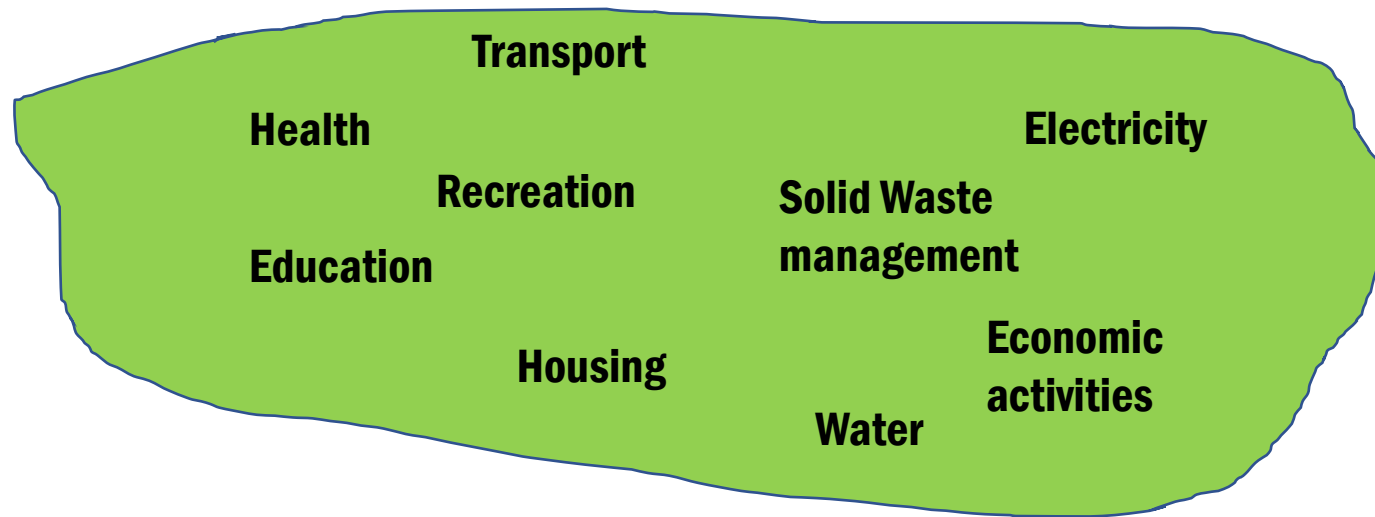
**India has 18% of the World's population
but only 2.5% of the World's land mass**

Urban areas occupy only a miniscule portion of this land and yet produce nearly 70% of our GDP

How effectively we use this small land resource will have a major impact on our development

Smart mapping and its visualization is critical for ensuring optimum use of scarce land resources

A city is a space – not a sector



- Multiple sectors need to fit into this space, in an integrated manner
- This needs supporting tools
- GeoSmart mapping and visualization is the most effective among them



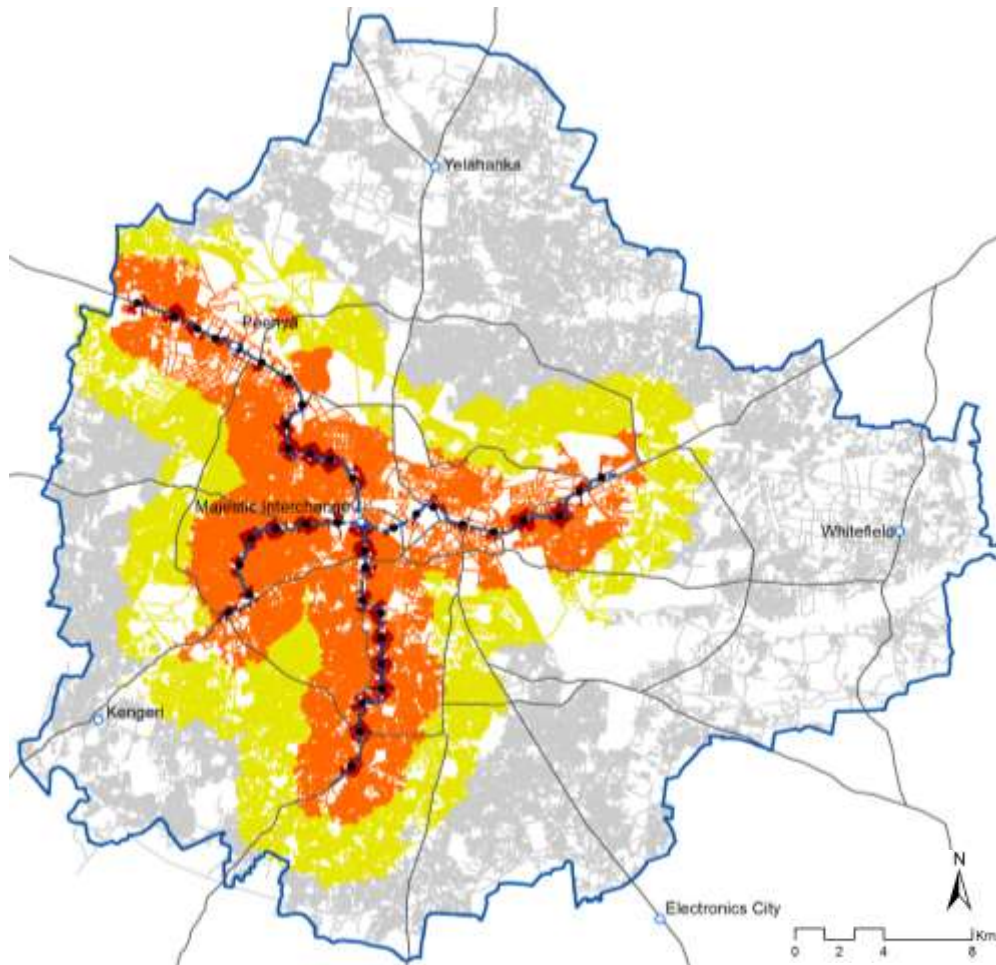
Example of Land Use and Transport Integration

Bangalore Metro: Captive population

0.7 million people live within 0.5 kms
(8% of 2011 Population)

3.7 million people live within 2.5
kms (45% of 2011 Population)

6.1 million people live within 5
kms (73% of 2011 City Population)



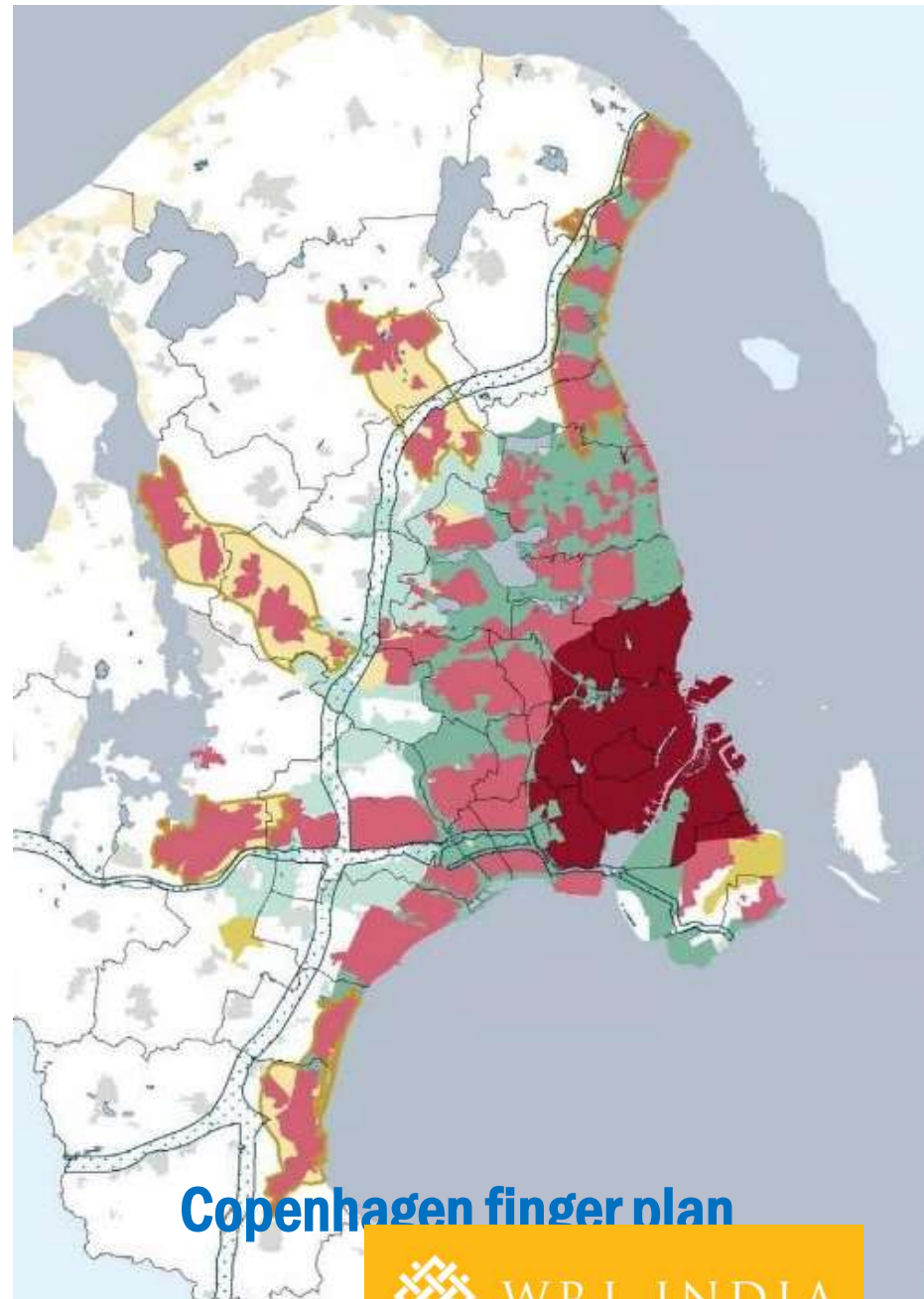
Legend

- Phase I Stations
- Bengaluru Corporation
- Major Roads
- Phase I metro line
- 500 m from stations
- 2500 m from stations
- 5000 m from stations
- Outside 5000m from stations





Singapore concept plan 2011



Copenhagen finger plan



WRI INDIA

There are several such applications

- Protecting ground water resources
- Locating schools and health centers
- Locating garbage dumps and toilets
- Designing bus routes

Literally thousands of possibilities



**GeoSmart mapping can help improve
coordination in a fragmented governance system**

A big challenge

Need for a much wider understanding of its potential outside the GeoSmart community

User agencies must embrace it and not feel threatened

It needs to be de-mystified

Thank you