

Trimble Water

Transforming the way the water industry works
through smart water technology solutions

Anand Sirohi,
Trimble India



A Global Leader

Trimble integrates hardware, software, wireless communications and services to provide integrated solutions that **maximize productivity and enhance profitability**

NASD:TRMB

Founded in 1978 as early GPS pioneer

\$3,1 Billion Revenue (2018)

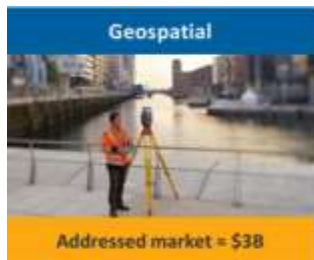
13% of revenue reinvested in R&D annually

Customers in over 150 countries

11,000+ employees

Organized into industry focused divisions

Global Business Segments



Reporting Segment:
Geospatial



Reporting Segment:
Buildings and Infrastructure



Reporting Segment:
Resources and Utilities



Reporting Segment:
Transportation

Emerging Business Segments

Forestry

Energy

Water

Rail

Field Service Management

Trimble Water

- Strategic, industry focused business unit
- Technology solutions for water, wastewater, stormwater & environmental water industries
- Market leader in IoT and remote monitoring
 - **In North America - Used by 100+ large and 3,000+ small/med utilities, flow service providers & AEC firms**
- Solutions across the infrastructure design-build-operate lifecycle



Planning and design



Surveying and mapping



Construction and project management



Operations and maintenance



Customer Service

Acquired November 2015



Our Mission is to Deliver Solutions that **Transform** the Way the Water Industry Works



Improving Asset
Management and
Performance



Optimizing Water and
Wastewater Operations



Enhancing Worker Safety
and Productivity



Improving Customer Service
and Response



Reducing Leakage and Non-
Revenue Water



Minimizing Flooding and
Environmental Impacts



Enhancing Public Health,
Compliance & Sustainability

Delivering focused solutions to meet today's industry challenges... Providing the building blocks for **Smart Water Management**



Pressure Transient

Flow Rate

Low Flow

Leak

Trimble Unity

A unified platform for managing critical assets and field operations



Mapping &
Asset
Management



Mobility



IoT &
Remote
Monitoring



Leak
Detection



- GIS Centric
- Cloud and Mobile Software
- Support Smart Water Management
- Improve Business Process
- Support Making Better Decisions
- Regulatory Compliance

Offering Innovative Solutions and Tools to Support Smart Water Management



GIS Mapping

Integrated mobile solutions, offering 3D and high accuracy mapping with intelligent workflows and tools for automating asset mapping and GIS updates.



Work Management & Mobility

Office, field software and rugged mobile solutions, offering asset maintenance, service and repair workflows. Improving field operations and workforce productivity.



Trimble Unity

Single Platform for Smart Water Management & Analytics

- GIS Mapping
- Remote Monitoring
- Work Management & Mobility
- Asset Management
- Alarm & Event Management
- Operational Insights & Analytics

Provide real-time operational awareness of asset performance, by transforming asset, operational information and network data into actionable intelligence for better decision making.

Powered By Telog Enterprise

Integrate and Extend Your Existing Systems



Trimble Unity allows dispatchers, supervisors, and field crews to access key operational information from a single platform



High Accuracy Mapping

- Out of box data collection apps using the Esri LGIM
- Support 1D & 2D barcodes for capturing asset specifications
- Capture and Attach Photos
- Capture High Accuracy GPS (With Meta-Data)
- Locate tool to quickly locate underground assets



Efficient Data Collection Workflow



Capture Accurate 3D Positions



Locate Hard to Find Assets



Keep GIS Up-to-date and Accurate





Mobility

Field software and rugged **mobile solutions** for extending back office systems to the field to **automate and streamline field operations** and workforce productivity



Streamline Field Service Operations



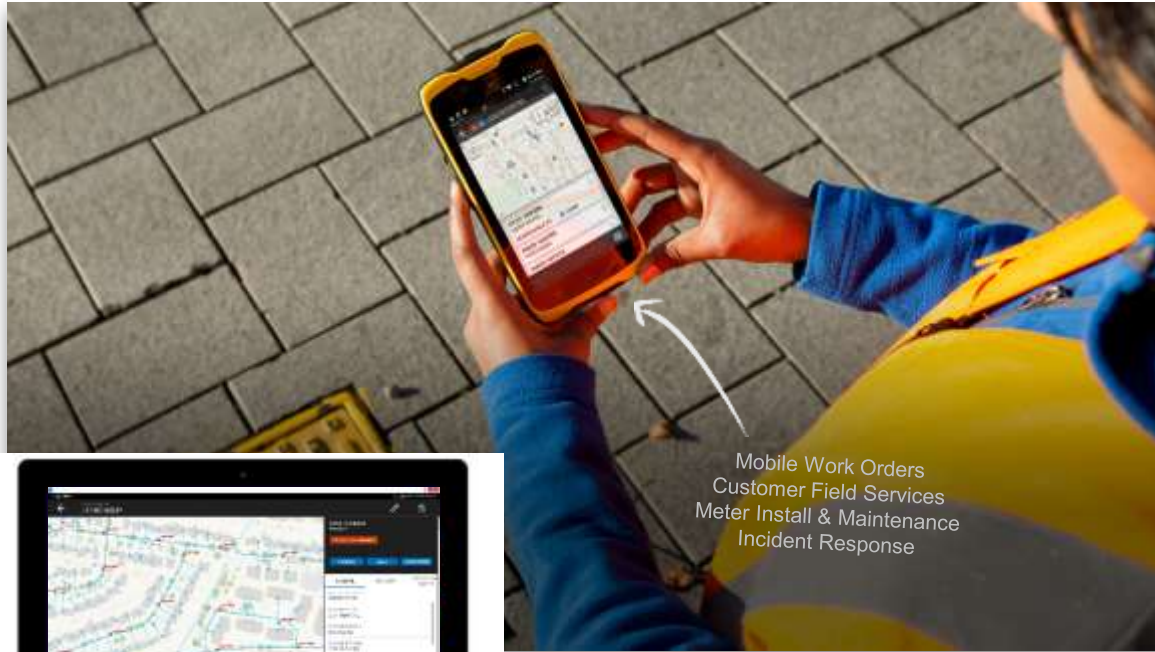
Enhance Worker Safety and Productivity



Support Regulatory Compliance and Reporting



Improve Customer Service and Response



Mobile Work Orders
Customer Field Services
Meter Install & Maintenance
Incident Response



Trimble Unity





MAPPING & ASSET MANAGEMENT

Work Management & Mobility

Mobile hardware and software solutions with **intelligent workflows** and tools for **asset maintenance**, repair and condition assessment



Streamline Asset Maintenance Operations



Enhance Worker Safety and Productivity



Improve Customer Service and Compliance



Support Capital Improvement Planning



TDC100
smartphone &
rugged GNSS
handheld

Juno T41
with RFID

Ranger 3
with antenna for
metal

Ranger 7
with modules

Asset Inspection
Condition Assessment
Asset Repair
Meter Install & Maintenance

Trimble Unity





MAPPING & ASSET MANAGEMENT

Asset Management

Mobile hardware and software solutions with **intelligent workflows** and tools for **asset maintenance**, repair and condition assessment



Streamline Asset Maintenance Operations



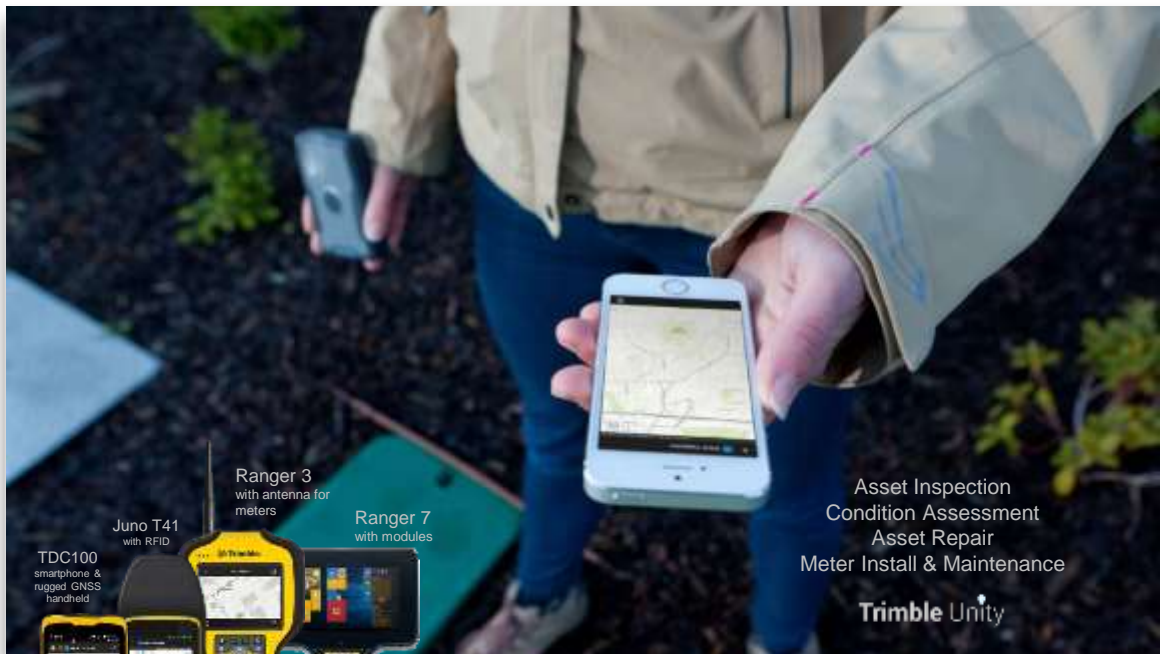
Enhance Worker Safety and Productivity



Improve Customer Service and Compliance



Support Capital Improvement Planning



Asset Inspection
Condition Assessment
Asset Repair
Meter Install & Maintenance

Trimble Unity



IoT & REMOTE MONITORING

Wireless Water Monitoring

IoT wireless rugged, battery powered **sensors, software and analytics** for **proactive water monitoring**, alarming and reporting



Real-time Situational Awareness



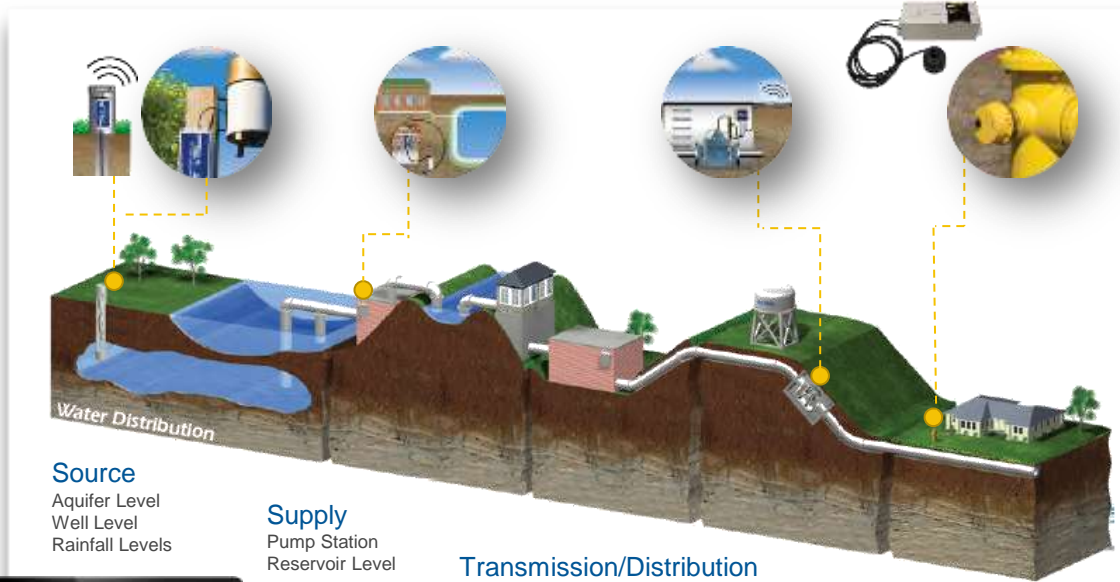
Reduce Leakage and Non-Revenue Water



Manage Pressure and Transient Events



Monitor and Optimize Water Operations



Source

Aquifer Level
Well Level
Rainfall Levels

Supply

Pump Station
Reservoir Level

Transmission/Distribution

Tank Level
Compound Meter
Mag Meter
Pressure Relief Valve
Pressure Reducing Valve
Water Quality
Leakage/NRW

Consumption

Hydrant Pressure
Water Hammer





IoT & REMOTE MONITORING

Wireless Wastewater & Stormwater Monitoring

telog LINTUFWSL



IoT wireless rugged, battery powered **sensors, software and analytics** for proactive **environmental water and overflow monitoring**, alarming and regulatory reporting



Real-time Situational Awareness



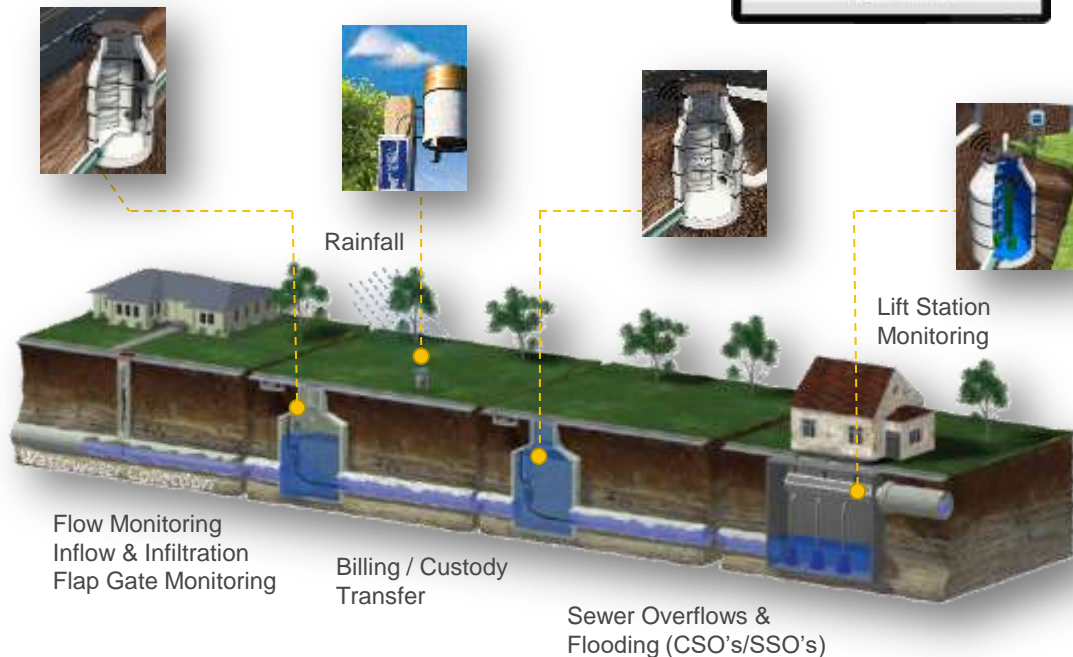
Minimize Flooding, CSO's, SSO's and Environmental Impacts



Streamline management and regulatory reporting



Monitor and Optimize Wastewater & Stormwater System Operations



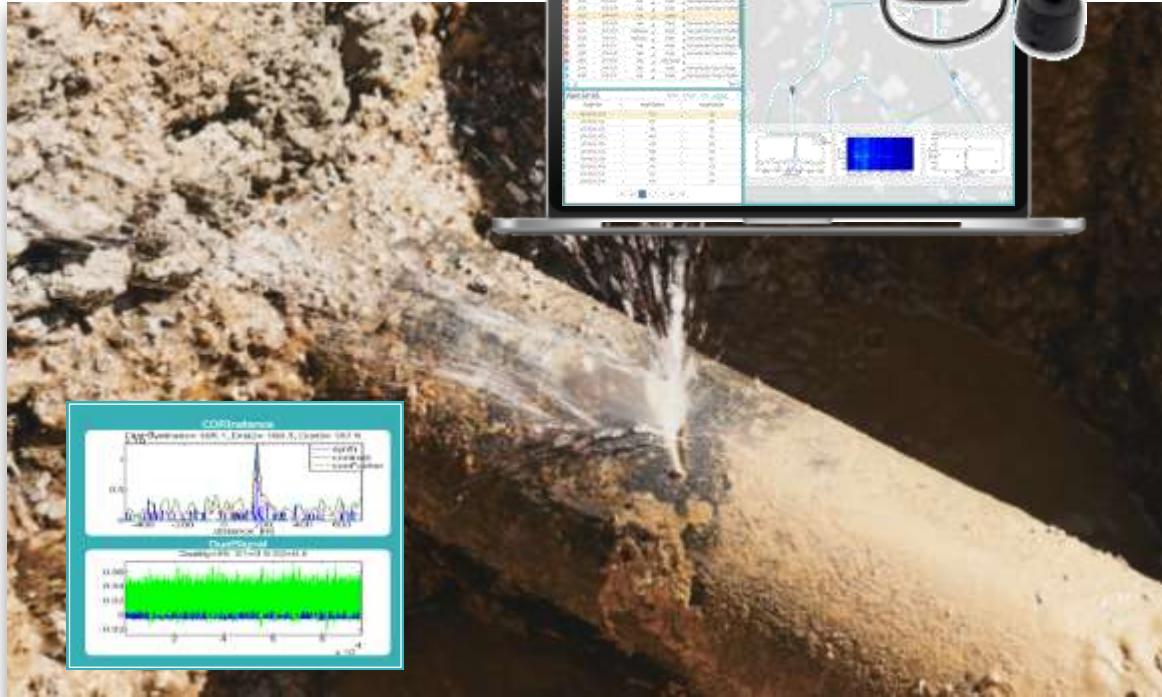


IoT & REMOTE MONITORING

Wireless Leak Detection, Monitoring & Pipeline Condition Assessment

An **innovative** solution for proactively **identifying leaks**, **pinpointing** their exact locations and **monitoring asset condition**, by using highly sensitive acoustic sensors, management software & mobile applications.

- Fixed Leak Detection System
- Mobile Leak Detection System



Comprehensive IoT and Smart Water Monitoring and Management Platform

- Flow
- Groundwater Level
- Level
- PRV Monitoring
- Surcharge
- Pump or Lift Station
- Tank Level
- Water Hammer
- Rainfall
- Pressure
- Water Quality
- Metering



Telog® Data Loggers & Sensors



Communications & Data Transfer



Telog® Monitoring and Data Sharing

SCADA
Historian
GIS
MDM



Smart Water Management Applications & Analytics

- Pressure Monitoring
- Leakage and NRW
- Flow and Level Monitoring
- Rainfall Monitoring
- Event Management
- Asset & Work Management
- GIS Mapping



Trimble SiteVision

Augmented Reality for Utility Field Operations



Trimble SiteVision for Utility Field Operations

- Visualizing underground infrastructure:
 - Water
 - Power
 - Gas
 - Telecommunications
- Crew site induction
- Improved crew safety, reduced interrupts
- Design vs. As-Built clash detection
- Pothole visualization
- Asset attributes accessibility



SiteVision

- Integrates with
 - Trimble Unity and Trimble Business Center
 - GIS data and 3D BIM models
- Creates and enables situational awareness
- Helps in collaboration, communication and information sharing





UTILITY MAPPING BY TERRAFLEX

Utility Viewing



True 3D



Pit View

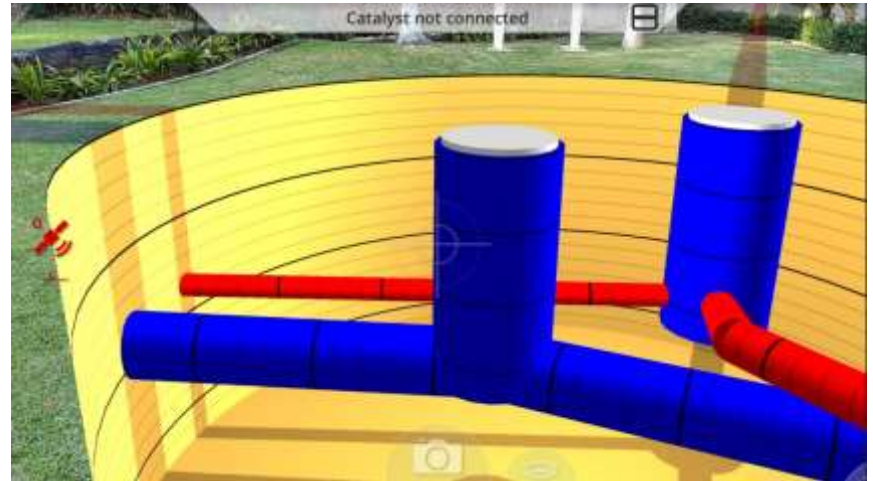


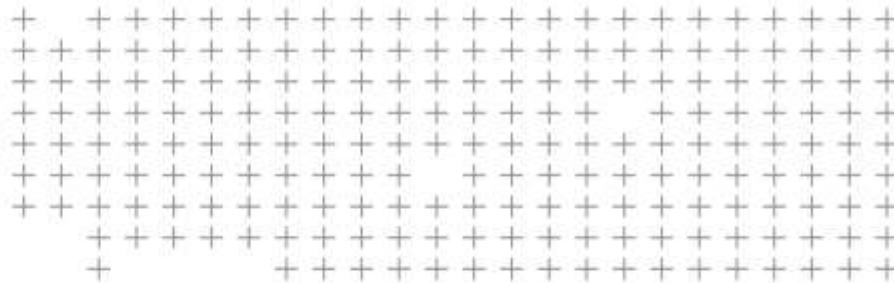
OnGround

- Underground objects in true 3D
- Pitview and ground projection

Pitview

- Shape
 - Round, Half Round, Cut Plane, Underground, Surface Only
- Diameter
 - Adjust pit width
- Depth
 - Adjust pit depth
- External Opacity
 - Adjust projected pipe opacity
- Pin Position
 - Keep the pit in one location





Transforming the way the water industry works
through smart water technology solutions

water@trimble.com
www.TrimbleWater.com



Newport Beach Office, California, USA
3501 Jamboree Road
Newport Beach, California 92660
+1 (949) 892-6120

Cork Office, Ireland
R.o.W : Trimble Navigation Limited
NSC Campus, Mahon, Cork Ireland
+353 21 230 9328

Chennai Office, India
C North 603 & 604, 6th Floor, Tidel Park
No. 4 Rajiv Gandhi Salai
Taramani, Chennai - 600 113
Tamil Nadu, India
+0442 254 1941/43/61/63



Telog (Rochester Office), New York, USA
830 Canning Parkway
Victor, New York 14564
+1 (585) 742-3000